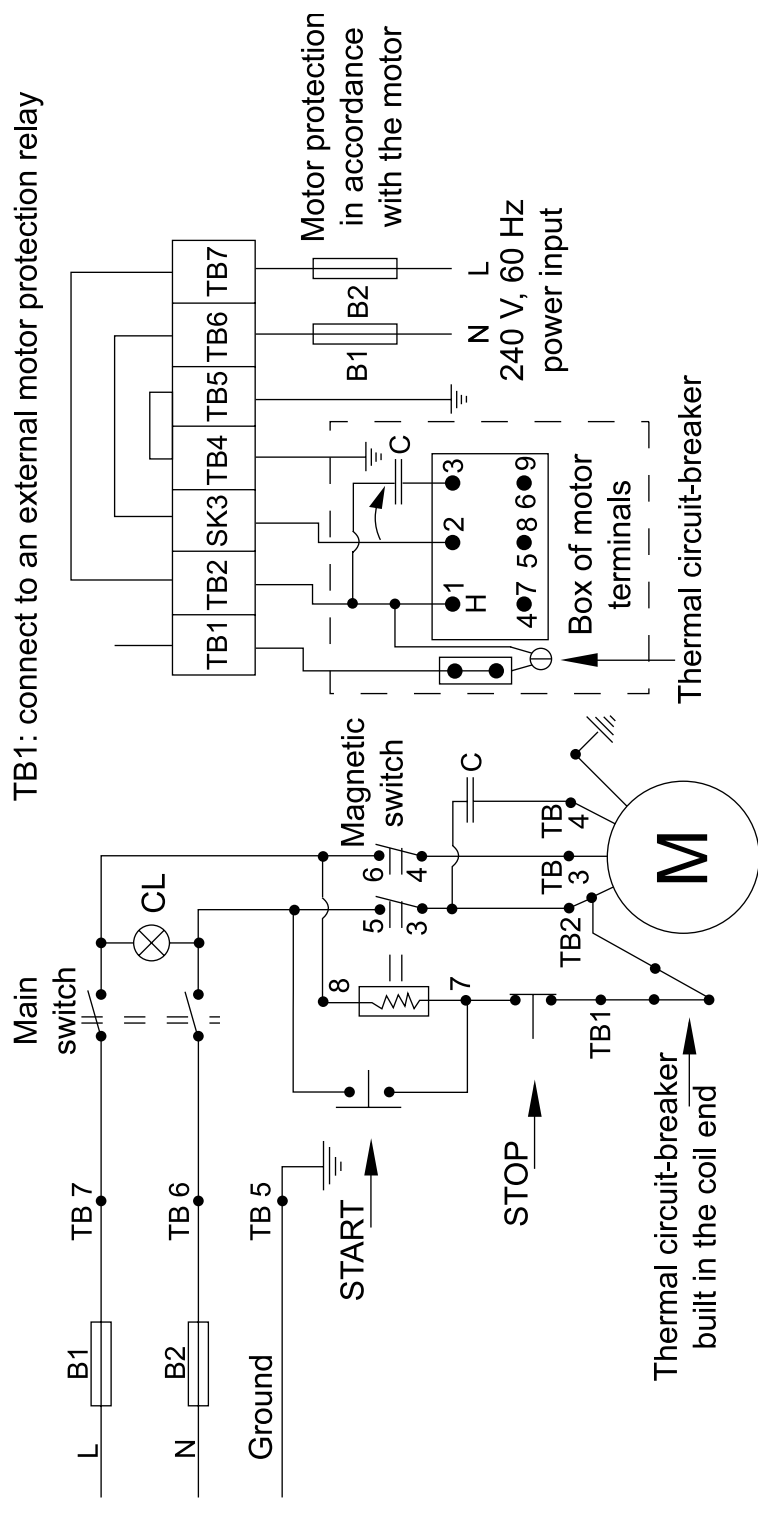


Fuses B1-B2 must be built into the junction box

### Circuit diagram for single-phase organ-blower

1-ph.A.C., 120 V, 60 Hz

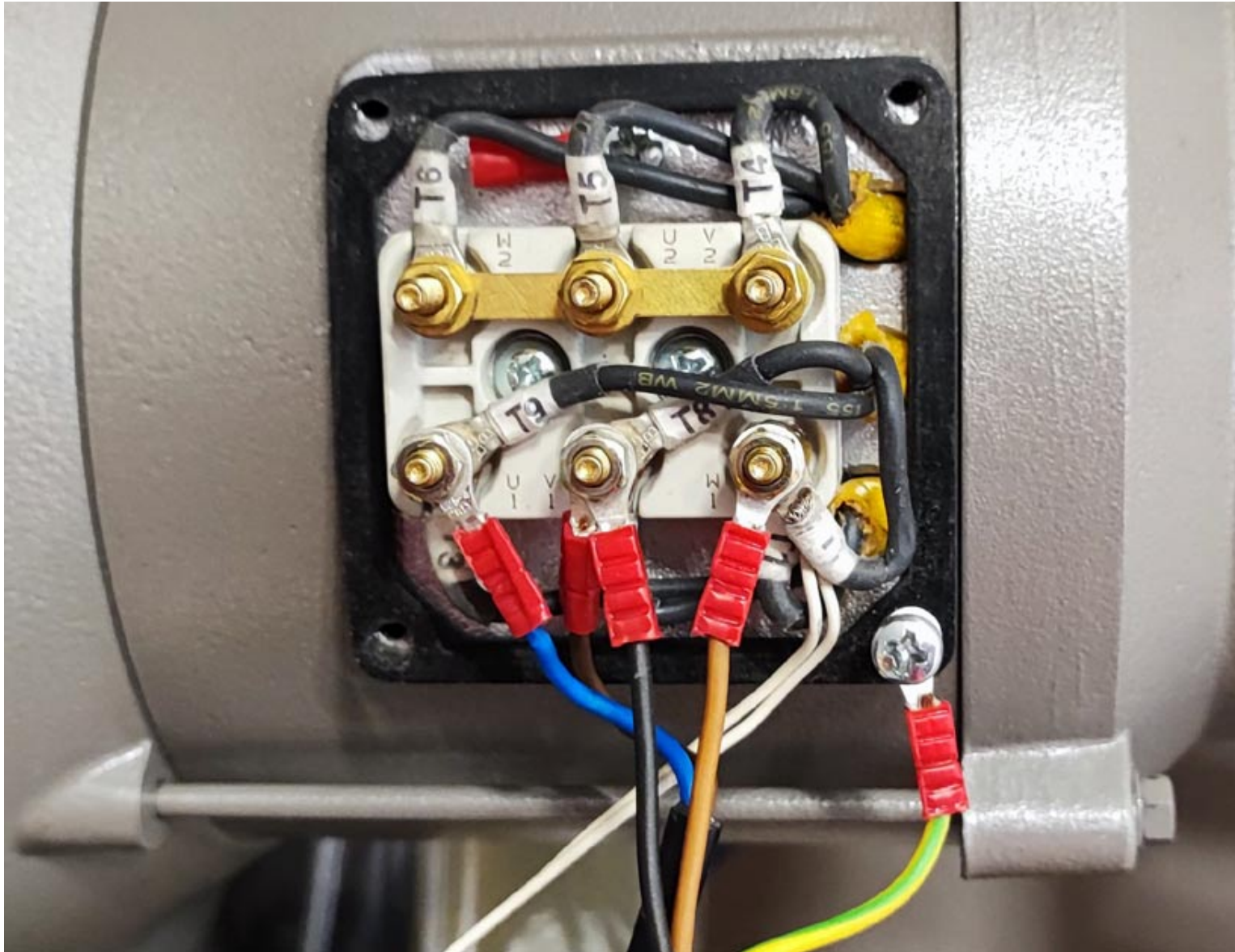


Fuses B1-B2 must be built into the junction box

### Circuit diagram for single-phase organ-blower

1-ph.A.C., 240 V, 60 Hz

**1-ph.A.C., 120 V, 60 Hz**



**coil wire:  
T1-T9, black**

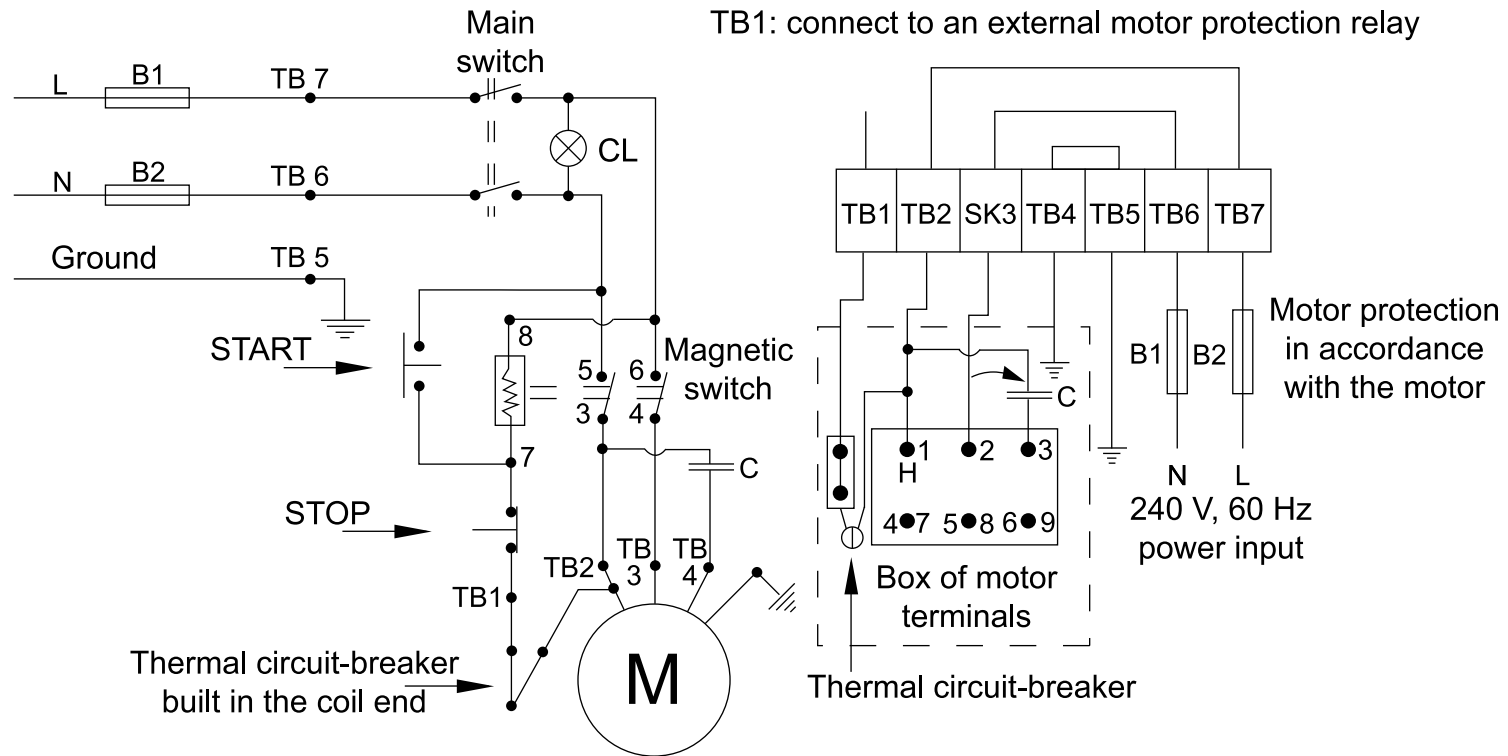
**thermal  
protection wire:  
2 white**

**capacitor:  
U1 blue,  
V1 brown**

**phase:  
V1 black**

**null:  
W1 brown**

**ground:  
green  
yellow**



Fuses B1-B2 must be built into the junction box

### Circuit diagram for single-phase organ-blower

1-ph.A.C., 240 V, 60 Hz

**3-ph.A.C., 208 V-240 V, 60 Hz**



**coil wire:  
T1-T9, gray**

**thermal protection  
wire:  
1 piece white  
1 piece brown**

**L3 phase:  
U1 black**

**L2 phase:  
V1 brown**

**L1 phase:  
W1 grey**

**ground:  
green  
yellow**

# Organ blower wiring diagram for type LVM

