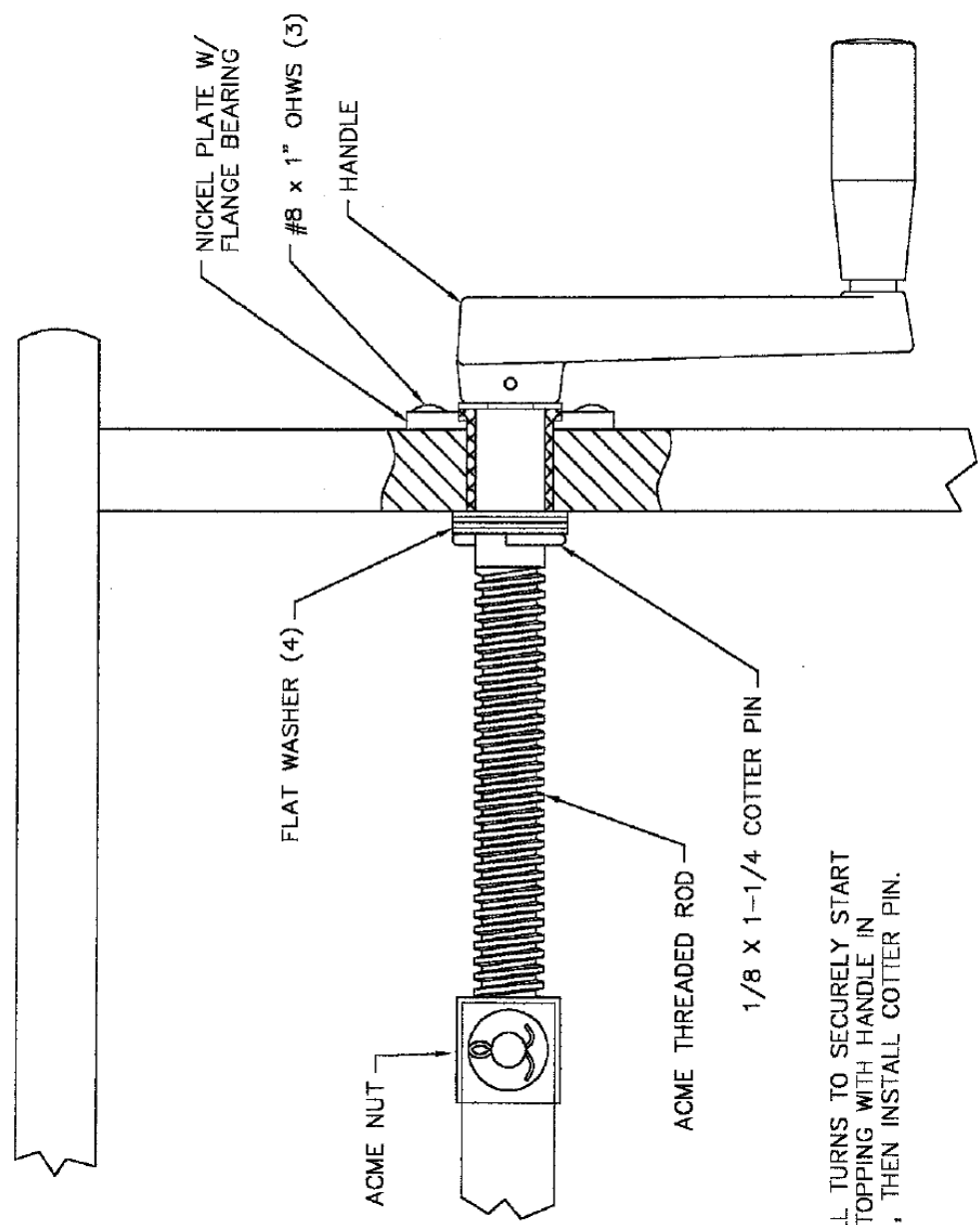


ORGAN SUPPLY INDUSTRIES

0515.00 Adjustable Bench Mechanism

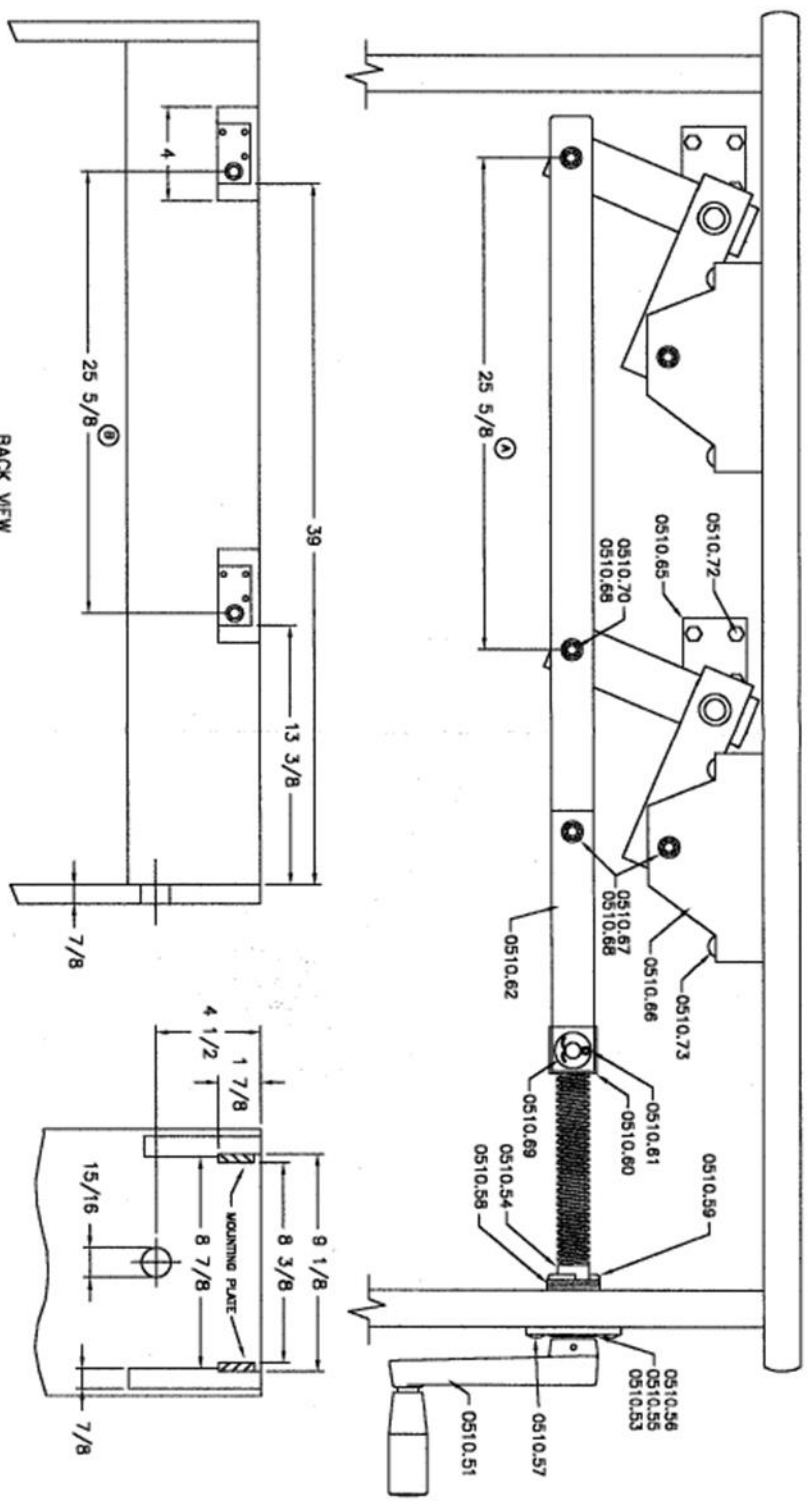
Parts List

Item	Part #	Material/Description	Qty
1	0510.51	Handle	1
2	2220.58	1/8" x 1" Roll Pin	1
3	0510.53	1/16" x 1/2" x 1-1/4" OD Washer Nickel Plate	1
4	0510.54	3/4" - 6P Acme Threaded Rod 7"	1
5	0510.55	Bearing - Bunting Flange Bearing	1
6	0510.56	3/16" x 2-1/4" OD Nickel Plate	1
7	0510.57	#8 x 1" OHWS	3
8	0510.58	25/32" ID x 1-1/4" OD Flat Steel Washer	4
9	0510.59	1/8" x 1-1/4" Cotter Key	1
10	0510.60	3/4" x 6P Acme Nut	1
11	0510.61	3/16" x 3/4" Cotter Key	2
12	0510.62	1/4" x 1" x 6-1/4" Connecting Links	2
13	0510.63	Wood Rod	1
14	0510.64	Square Arms	2
15	0510.65	Pivot Plates	4
16	0510.66	Wood Seat Blocks	4
17	0510.67	1/4" OD x 2-1/4" Steel Pin	5
18	0510.68	1/4" Push Nuts	14
19	0510.69	3/8" ID x 13/16" SAE Flat Washer	2
20	0510.70	1/4" x 1-3/4" Steel Pin	2
21	0510.72	#10 x 1" Hex Washer and HD Screw	12
22	0510.73	#10 x 1-3/4" RHWS	16



TURN HANDLE 3 FULL TURNS TO SECURELY START
 THREAD INTO NUT STOPPING WITH HANDLE IN
 DOWNWARD POSITION, THEN INSTALL COTTER PIN.

SYMBOL	DESCRIPTION	QTY	UNIT	DATE
*	RELEASE FOR TOOLING			
A	REV. 1.0 - 1/16" DIA. S-28 WAS 5/16" SQUARE MAX. VIB			10/24/88
B	REV. 2.0 - 1/16" DIA. S-28 WAS 5/16" SQUARE MAX. VIB			10/24/88
C	REV. 3.0 - 1/16" DIA. S-28 WAS 5/16" SQUARE MAX. VIB			10/24/88
D	REV. 4.0 - 1/16" DIA. S-28 WAS 5/16" SQUARE MAX. VIB			10/24/88
E	REV. 5.0 - 1/16" DIA. S-28 WAS 5/16" SQUARE MAX. VIB			10/24/88
F	REV. 6.0 - 1/16" DIA. S-28 WAS 5/16" SQUARE MAX. VIB			10/24/88
G	REV. 7.0 - 1/16" DIA. S-28 WAS 5/16" SQUARE MAX. VIB			10/24/88
H	REV. 8.0 - 1/16" DIA. S-28 WAS 5/16" SQUARE MAX. VIB			10/24/88
I	REV. 9.0 - 1/16" DIA. S-28 WAS 5/16" SQUARE MAX. VIB			10/24/88
J	REV. 10.0 - 1/16" DIA. S-28 WAS 5/16" SQUARE MAX. VIB			10/24/88
K	REV. 11.0 - 1/16" DIA. S-28 WAS 5/16" SQUARE MAX. VIB			10/24/88
L	REV. 12.0 - 1/16" DIA. S-28 WAS 5/16" SQUARE MAX. VIB			10/24/88
M	REV. 13.0 - 1/16" DIA. S-28 WAS 5/16" SQUARE MAX. VIB			10/24/88
N	REV. 14.0 - 1/16" DIA. S-28 WAS 5/16" SQUARE MAX. VIB			10/24/88
O	REV. 15.0 - 1/16" DIA. S-28 WAS 5/16" SQUARE MAX. VIB			10/24/88
P	REV. 16.0 - 1/16" DIA. S-28 WAS 5/16" SQUARE MAX. VIB			10/24/88
Q	REV. 17.0 - 1/16" DIA. S-28 WAS 5/16" SQUARE MAX. VIB			10/24/88
R	REV. 18.0 - 1/16" DIA. S-28 WAS 5/16" SQUARE MAX. VIB			10/24/88
S	REV. 19.0 - 1/16" DIA. S-28 WAS 5/16" SQUARE MAX. VIB			10/24/88
T	REV. 20.0 - 1/16" DIA. S-28 WAS 5/16" SQUARE MAX. VIB			10/24/88
U	REV. 21.0 - 1/16" DIA. S-28 WAS 5/16" SQUARE MAX. VIB			10/24/88
V	REV. 22.0 - 1/16" DIA. S-28 WAS 5/16" SQUARE MAX. VIB			10/24/88
W	REV. 23.0 - 1/16" DIA. S-28 WAS 5/16" SQUARE MAX. VIB			10/24/88
X	REV. 24.0 - 1/16" DIA. S-28 WAS 5/16" SQUARE MAX. VIB			10/24/88
Y	REV. 25.0 - 1/16" DIA. S-28 WAS 5/16" SQUARE MAX. VIB			10/24/88
Z	REV. 26.0 - 1/16" DIA. S-28 WAS 5/16" SQUARE MAX. VIB			10/24/88
AA	REV. 27.0 - 1/16" DIA. S-28 WAS 5/16" SQUARE MAX. VIB			10/24/88
AB	REV. 28.0 - 1/16" DIA. S-28 WAS 5/16" SQUARE MAX. VIB			10/24/88
AC	REV. 29.0 - 1/16" DIA. S-28 WAS 5/16" SQUARE MAX. VIB			10/24/88
AD	REV. 30.0 - 1/16" DIA. S-28 WAS 5/16" SQUARE MAX. VIB			10/24/88
AE	REV. 31.0 - 1/16" DIA. S-28 WAS 5/16" SQUARE MAX. VIB			10/24/88
AF	REV. 32.0 - 1/16" DIA. S-28 WAS 5/16" SQUARE MAX. VIB			10/24/88
AG	REV. 33.0 - 1/16" DIA. S-28 WAS 5/16" SQUARE MAX. VIB			10/24/88
AH	REV. 34.0 - 1/16" DIA. S-28 WAS 5/16" SQUARE MAX. VIB			10/24/88
AI	REV. 35.0 - 1/16" DIA. S-28 WAS 5/16" SQUARE MAX. VIB			10/24/88
AJ	REV. 36.0 - 1/16" DIA. S-28 WAS 5/16" SQUARE MAX. VIB			10/24/88
AK	REV. 37.0 - 1/16" DIA. S-28 WAS 5/16" SQUARE MAX. VIB			10/24/88
AL	REV. 38.0 - 1/16" DIA. S-28 WAS 5/16" SQUARE MAX. VIB			10/24/88
AM	REV. 39.0 - 1/16" DIA. S-28 WAS 5/16" SQUARE MAX. VIB			10/24/88
AN	REV. 40.0 - 1/16" DIA. S-28 WAS 5/16" SQUARE MAX. VIB			10/24/88
AO	REV. 41.0 - 1/16" DIA. S-28 WAS 5/16" SQUARE MAX. VIB			10/24/88
AP	REV. 42.0 - 1/16" DIA. S-28 WAS 5/16" SQUARE MAX. VIB			10/24/88
AQ	REV. 43.0 - 1/16" DIA. S-28 WAS 5/16" SQUARE MAX. VIB			10/24/88
AR	REV. 44.0 - 1/16" DIA. S-28 WAS 5/16" SQUARE MAX. VIB			10/24/88
AS	REV. 45.0 - 1/16" DIA. S-28 WAS 5/16" SQUARE MAX. VIB			10/24/88
AT	REV. 46.0 - 1/16" DIA. S-28 WAS 5/16" SQUARE MAX. VIB			10/24/88
AU	REV. 47.0 - 1/16" DIA. S-28 WAS 5/16" SQUARE MAX. VIB			10/24/88
AV	REV. 48.0 - 1/16" DIA. S-28 WAS 5/16" SQUARE MAX. VIB			10/24/88
AW	REV. 49.0 - 1/16" DIA. S-28 WAS 5/16" SQUARE MAX. VIB			10/24/88
AX	REV. 50.0 - 1/16" DIA. S-28 WAS 5/16" SQUARE MAX. VIB			10/24/88
AY	REV. 51.0 - 1/16" DIA. S-28 WAS 5/16" SQUARE MAX. VIB			10/24/88
AZ	REV. 52.0 - 1/16" DIA. S-28 WAS 5/16" SQUARE MAX. VIB			10/24/88
BA	REV. 53.0 - 1/16" DIA. S-28 WAS 5/16" SQUARE MAX. VIB			10/24/88
BB	REV. 54.0 - 1/16" DIA. S-28 WAS 5/16" SQUARE MAX. VIB			10/24/88
BC	REV. 55.0 - 1/16" DIA. S-28 WAS 5/16" SQUARE MAX. VIB			10/24/88
BD	REV. 56.0 - 1/16" DIA. S-28 WAS 5/16" SQUARE MAX. VIB			10/24/88
BE	REV. 57.0 - 1/16" DIA. S-28 WAS 5/16" SQUARE MAX. VIB			10/24/88
BF	REV. 58.0 - 1/16" DIA. S-28 WAS 5/16" SQUARE MAX. VIB			10/24/88
BG	REV. 59.0 - 1/16" DIA. S-28 WAS 5/16" SQUARE MAX. VIB			10/24/88
BH	REV. 60.0 - 1/16" DIA. S-28 WAS 5/16" SQUARE MAX. VIB			10/24/88
BI	REV. 61.0 - 1/16" DIA. S-28 WAS 5/16" SQUARE MAX. VIB			10/24/88
BJ	REV. 62.0 - 1/16" DIA. S-28 WAS 5/16" SQUARE MAX. VIB			10/24/88
BK	REV. 63.0 - 1/16" DIA. S-28 WAS 5/16" SQUARE MAX. VIB			10/24/88
BL	REV. 64.0 - 1/16" DIA. S-28 WAS 5/16" SQUARE MAX. VIB			10/24/88
BM	REV. 65.0 - 1/16" DIA. S-28 WAS 5/16" SQUARE MAX. VIB			10/24/88
BN	REV. 66.0 - 1/16" DIA. S-28 WAS 5/16" SQUARE MAX. VIB			10/24/88
BO	REV. 67.0 - 1/16" DIA. S-28 WAS 5/16" SQUARE MAX. VIB			10/24/88
BP	REV. 68.0 - 1/16" DIA. S-28 WAS 5/16" SQUARE MAX. VIB			10/24/88
BQ	REV. 69.0 - 1/16" DIA. S-28 WAS 5/16" SQUARE MAX. VIB			10/24/88
BR	REV. 70.0 - 1/16" DIA. S-28 WAS 5/16" SQUARE MAX. VIB			10/24/88
BS	REV. 71.0 - 1/16" DIA. S-28 WAS 5/16" SQUARE MAX. VIB			10/24/88
BT	REV. 72.0 - 1/16" DIA. S-28 WAS 5/16" SQUARE MAX. VIB			10/24/88
BU	REV. 73.0 - 1/16" DIA. S-28 WAS 5/16" SQUARE MAX. VIB			10/24/88
BV	REV. 74.0 - 1/16" DIA. S-28 WAS 5/16" SQUARE MAX. VIB			10/24/88
BW	REV. 75.0 - 1/16" DIA. S-28 WAS 5/16" SQUARE MAX. VIB			10/24/88
BX	REV. 76.0 - 1/16" DIA. S-28 WAS 5/16" SQUARE MAX. VIB			10/24/88
BY	REV. 77.0 - 1/16" DIA. S-28 WAS 5/16" SQUARE MAX. VIB			10/24/88
BZ	REV. 78.0 - 1/16" DIA. S-28 WAS 5/16" SQUARE MAX. VIB			10/24/88
CA	REV. 79.0 - 1/16" DIA. S-28 WAS 5/16" SQUARE MAX. VIB			10/24/88
CB	REV. 80.0 - 1/16" DIA. S-28 WAS 5/16" SQUARE MAX. VIB			10/24/88
CC	REV. 81.0 - 1/16" DIA. S-28 WAS 5/16" SQUARE MAX. VIB			10/24/88
CD	REV. 82.0 - 1/16" DIA. S-28 WAS 5/16" SQUARE MAX. VIB			10/24/88
CE	REV. 83.0 - 1/16" DIA. S-28 WAS 5/16" SQUARE MAX. VIB			10/24/88
CF	REV. 84.0 - 1/16" DIA. S-28 WAS 5/16" SQUARE MAX. VIB			10/24/88
CG	REV. 85.0 - 1/16" DIA. S-28 WAS 5/16" SQUARE MAX. VIB			10/24/88
CH	REV. 86.0 - 1/16" DIA. S-28 WAS 5/16" SQUARE MAX. VIB			10/24/88
CI	REV. 87.0 - 1/16" DIA. S-28 WAS 5/16" SQUARE MAX. VIB			10/24/88
CJ	REV. 88.0 - 1/16" DIA. S-28 WAS 5/16" SQUARE MAX. VIB			10/24/88
CK	REV. 89.0 - 1/16" DIA. S-28 WAS 5/16" SQUARE MAX. VIB			10/24/88
CL	REV. 90.0 - 1/16" DIA. S-28 WAS 5/16" SQUARE MAX. VIB			10/24/88
CM	REV. 91.0 - 1/16" DIA. S-28 WAS 5/16" SQUARE MAX. VIB			10/24/88
CN	REV. 92.0 - 1/16" DIA. S-28 WAS 5/16" SQUARE MAX. VIB			10/24/88
CO	REV. 93.0 - 1/16" DIA. S-28 WAS 5/16" SQUARE MAX. VIB			10/24/88
CP	REV. 94.0 - 1/16" DIA. S-28 WAS 5/16" SQUARE MAX. VIB			10/24/88
CQ	REV. 95.0 - 1/16" DIA. S-28 WAS 5/16" SQUARE MAX. VIB			10/24/88
CR	REV. 96.0 - 1/16" DIA. S-28 WAS 5/16" SQUARE MAX. VIB			10/24/88
CS	REV. 97.0 - 1/16" DIA. S-28 WAS 5/16" SQUARE MAX. VIB			10/24/88
CT	REV. 98.0 - 1/16" DIA. S-28 WAS 5/16" SQUARE MAX. VIB			10/24/88
CU	REV. 99.0 - 1/16" DIA. S-28 WAS 5/16" SQUARE MAX. VIB			10/24/88
CV	REV. 100.0 - 1/16" DIA. S-28 WAS 5/16" SQUARE MAX. VIB			10/24/88



NOTES:
 1. FOR SMOOTH OPERATION
 DIMENSION (A) MUST MATCH
 DIMENSION (B). ADJUST (C)
 TO MATCH (D) AS NEEDED.

ITEM	PART NO.	QTY.	UNIT	DESCRIPTION
DIAGRAM SUPPLY INDUSTRIES Inc., Erie, Pa.				
ADJUSTABLE BENCH PARTS INSTALLATION INSTRUCTIONS				
DRAWING NO. INS-01				
MATERIAL				
REV. 1 OF 1				
DATE				
DRAWN BY				
CHECKED BY				
APPROVED BY				
DATE				
SCALE				
SHEET				
TOTAL SHEETS				
TOLERANCES UNLESS OTHERWISE SPECIFIED				
FRACTIONS 1/16"				
DECIMALS .005				
HOLE SIZE .005				
HOLE POSITION .005				
SURFACE FINISH				
MATERIAL				
REV. 1 OF 1				
DATE				
DRAWN BY				
CHECKED BY				
APPROVED BY				
DATE				
SCALE				
SHEET				
TOTAL SHEETS				